



Junction Box Format\*

- Increases productivity
- Enhances animal welfare
- Durable, Built For Your Barn® design
- Fully dimmable with sunrise and sunset feature
- Advanced 10W LED system specialized for poultry
- Dim-to-Blue® technology helps bird development
- Low-profile, wide 200° beam angle
- Improves flock uniformity



Base Unit Format\*\*



Edison Base Format



Hard Wire Format



Jelly Jar Format

\*Product shown with recommended junction box  
\*\*Compatible with AgriShift® STC/STA Stringer



AgriShift® lighting systems “shift” spectrum and intensity, meeting the individual needs of your animals†.



Dim-to-Blue® technology encourages uniform growth by offering healthy bird development during every growth stage.



A Built For Your Barn® design uses techniques and materials that withstand harsh barn environments for years to come.

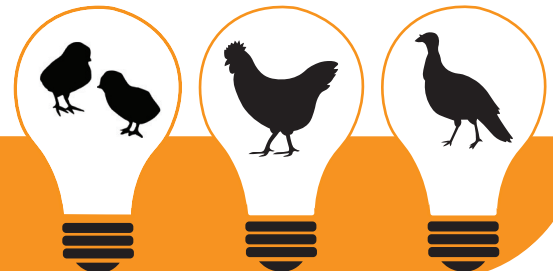
## Animal-Centric Lighting Systems

The AgriShift® MLM-B is an animal welfare-friendly lighting solution made to meet a birds’ developmental needs at every stage of growth. Designed with Dim-to-Blue® technology, it optimizes performance by providing a species-specific spectrum shown to naturally calm chickens, minimizing aggressive behaviors.

### The Science Behind the Technology

The AgriShift® MLM-B has an enhanced blue and green spectrum with added red content for early bird development.

Green light increases growth during early stages of development, while blue light is shown to be helpful in the growth of poultry at a later age by elevating plasma androgens. Other studies show that blue light keeps birds calm, reduces corticosterone levels and heterophil:lymphocyte ratios—blood markers for short- and long-term stress and positively affects blood glucose and triglyceride levels.



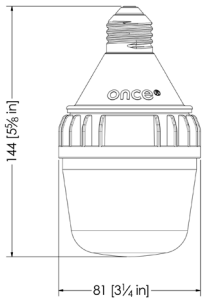
## AgriShift® MLM-B Specifications

Nominal Power	10W (at full intensity)
Luminous Flux	794 lm human photopic (120V) 1382 lm poultry photopic (120V)
Input Voltage	120 VAC / 60 Hz, 230 VAC / 50/60 Hz
Beam Angle	200°
Light Output Equivalence	Up to 60W incandescent
Spectral Output	Species-specific blue/green enhanced white, w/ added red
Operating Temperature	-20°C to 40°C / -4°F to 104°F
Dimmable Range	100% to 5%, dims to blue white moonlight
Dimmer Type	Phase Modulation or Amplitude Control*
Environmental Ratings	Suitable for indoor corrosive environments per UL50E Salt Spray Test (BU, JB, JJ, HW), Suitable for damp locations, RoHS Compliant
Safety	Conforms to ANSI/UL STD 1598 (BU, JB, JJ, HW), Certified to Can/CSA STD. C22.2 NO. 250.0 (BU, JB, JJ, HW), Certified to CAN/CSA STD C22.2 NO. 1993 (EB), Conforms to ANSI/UL STD. 1993 (EB)
Rated Life	50,000 hours

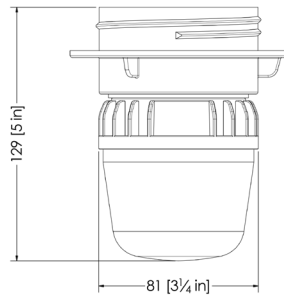
\*For optimum dimming performance use AgriShift® Controllers  
\*\*Includes (4) stainless steel screws

## AgriShift® MLM-B Mechanical Dimensions

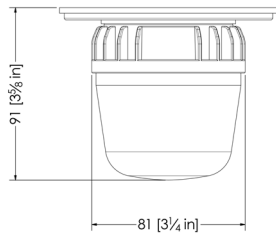
Edison Base (EB)



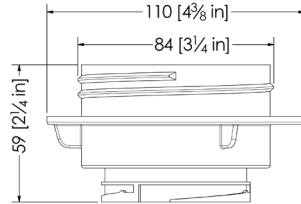
Jelly Jar (JJ)



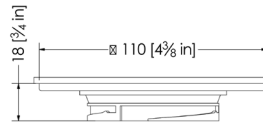
Junction Box (JB)



JJ Adaptor Kit\*\*



JB Adaptor Kit\*\*



## Ordering Information

### AgriShift® MLM-B 120V

Base Unit (BU)  
Edison Base (EB)  
Jelly Jar (JJ)  
*Includes JJ adaptor/connector kit*  
Junction Box (JB)  
*Includes JB adaptor/connector kit*  
Hard Wire (HW)

### AgriShift® MLM-B 230V

Base Unit (BU)  
Edison Base (EB)  
Jelly Jar (JJ)  
*Includes JJ adaptor/connector kit*  
Junction Box (JB)  
*Includes JB adaptor/connector kit*  
Hard Wire (HW)

### AgriShift® MLM-B Accessories

AgriShift® G Controller  
AgriShift® Master Controller 120V  
AgriShift® Slave Dimmer 120V  
AgriShift® Master Controller 240V-50Hz  
AgriShift® Master Controller 240V-60Hz  
Junction Box  
*Five 3/4" threaded outlets*  
Junction Box  
*Five total 3/4" KO hubs, four sealed*  
AgriShift® STC, Stringer Connector  
*~24 1/2 m OAL, 2.43 m sections*  
AgriShift® STC, Stringer Connector  
*~30 1/2 m OAL, 3 m sections*  
AgriShift® STA, Stringer Adaptor, 30 cm OAL  
AgriShift® STA, Stringer Adaptor, 1 m OAL  
AgriShift® STA, Stringer Adaptor, 2 m OAL  
AgriShift® STA, Stringer Adaptor, 3 m OAL  
Starter Cable, 4 ft OAL  
*Male connector on one end*

### SKU

MLM-FSWB-BU-180T-010-120  
MLM-FSWB-EB-180T-010-120  
MLM-FSWB-JJ-180T-010-120

MLM-FSWB-JB-180T-010-120

MLM-FSWB-HW-180T-010-120

### SKU

MLM-FSWB-BU-180T-010-230  
MLM-FSWB-EB-180T-010-230  
MLM-FSWB-JJ-180T-010-230

MLM-FSWB-JB-180T-010-230

MLM-FSWB-HW-180T-010-230

### SKU

ALC-G2S-UNAC-2-10  
30-014-00188-L123  
30-014-00189-L123  
30-014-00180-L123  
30-014-00180-L123-60Hz  
PRB57550GY

PRB575GYKO

STC-0183-10-080

STC-0184-10-100

STA-0197-3-012

STA-0189-3-039

STA-0190-3-079

STA-0191-3-118

STAR-0198-3-004

NEWLY  
RELEASED!

## AgriShift® STC/STA Stringer Connector/Adaptor

The AgriShift® STC/STA is a stringer designed with the flexibility to fit any ONCE® ML fixture or select in-system tube lighting option. The various drop cord lengths allow for easy and cost efficient installation.

Attaching to the ceiling of barns up to 152 meters long, the AgriShift® STC/STA comes in 25 or 30 1/2 meter lengths, with 2.43 or 3 meter sections.

