

JLL Tall

JLL Short

- Fully dimmable
- Improves animal welfare
- Decreases time to peak production
- Advanced 8W LED system optimized for layers
- Dim-to-Red® technology enhances flock performance
- Patented spectral output for avian vision
- Durable, Built For Your Barn® design

Products shown with recommended junction box.



AgriShift® lighting systems "shift" spectrum and intensity, meeting the individual needs of your animals¹.



Dim-to-Red® technology provides natural dawn and dusk simulation, reducing stress on your animals.



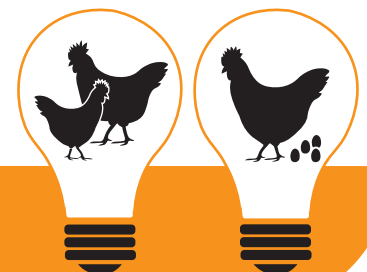
A Built For Your Barn® design uses techniques and materials that withstand harsh barn environments for years to come.

Animal-Centric Lighting Systems

The AgriShift® JLL makes it easy to improve the production and welfare of your bird by providing natural daylight simulation. The Dim-to-Red® technology used outputs a red spectrum which has been shown to decrease time to peak production by stimulating the release of two reproduction regulating hormones essential for sexual maturation and daily egg laying. Sunrise and sunset simulation eliminates the stress of switching lights on and off abruptly. This lessens overall stress in flock and lowers mortality, while improving immune response.

The Science Behind the Technology

The AgriShift® JLL has a deep red saturated light output with an added blue and green spectrum, benefiting the vision of your animal. The enhanced red spectrum is the only spectrum which stimulates a bird's hypothalamic and pineal oscillators, helping maintain circadian rhythms and promoting sexual maturity.



AgriShift® JLL Specifications

Nominal Power	8W (at full intensity)
Luminous Flux	575 lm human photopic 1120 lm poultry photopic
Light Output Equivalence	Up to 40W incandescent
Input Voltage	120 VAC / 50/60 Hz
Beam Angle	180° (Short) 200° (Tall)
Spectral Output	Species-specific red enhanced white
Operating Temperature	-20°C to 40°C / -4°F to 104°F
Dimmable Range	100% to 5%, dims-to-red hue
Dimmer Type	Phase Modulation or Amplitude Control*
Environmental Ratings	Suitable for wet locations, RoHs Compliant
Safety	Conforms to UL Std. 1598 Certified to CAN/CSA C22.2 No. 250
Rated Life	50,000 hours

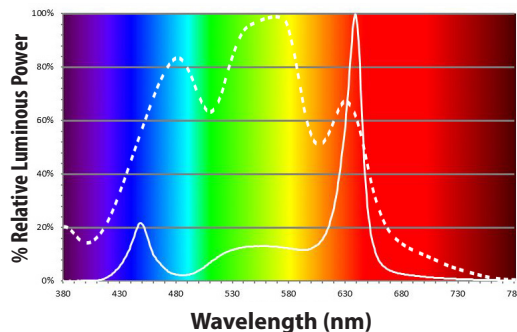
Ordering Information

AgriShift® JLL (Tall) <i>Junction Box Mount (JB)‡</i>	SKU JLL-FSWR-JB-180T-008-120
AgriShift® JLL (Short) <i>Junction Box Mount (JB)‡</i>	JLL-FSWR-JB-180S-008-120
AgriShift® JLL Accessories	SKU
AgriShift® G Controller	ALC-G2S-UNAC-2-10
AgriShift® Master Controller 120V	30-014-00188-L123
AgriShift® Slave Dimmer 120V	30-014-00189-L123
AgriShift® Master Controller 240V-50Hz	30-014-00180-L123
AgriShift® Master Controller 240V-60Hz Junction Box	30-014-00180-L123-60Hz PRB57550GY
<i>Five 3/4" threaded outlets</i> Junction Box	PRB575GYKO
<i>Five total 3/4" KO hubs, four sealed</i>	

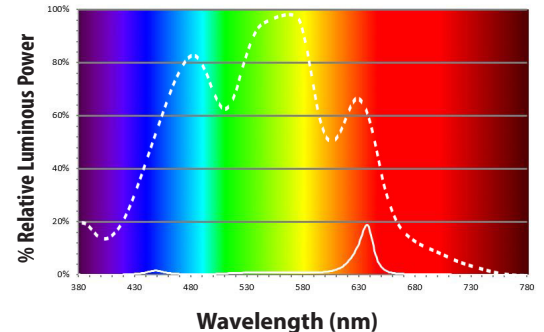
*For optimum dimming performance use AgriShift® Controllers
‡All units are packaged individually with attached integral gasket and 2 screws.
Junction Box not included. See installation manual for proper installation.

The spectral output charts to the right show the AgriShift® JLL 120V at 100% (left) compared to it dimmed to 20% (right), while demonstrating how a chicken sees the light (dotted line).

JLL Spectral Output at 100%



JLL Spectral Output Dimmed to 20%



Complete Your AgriShift® Lighting System: AgriShift® G Controller

- Improves animal welfare
- Offers several advanced features, adding flexibility
- Eliminates lighting anomalies to increase production
- Universal input power

The AgriShift® G Controller is a slave dimmer that provides full potential to any ONCE® AC lighting fixture. It offers smooth dimming solutions that can easily be controlled by two separate 0-10 VDC control signals and several advanced features, giving added flexibility while addressing the complex needs of today's modern agriculture facilities.

