



Base Unit
Format**



Edison Base
Format



Hard Wire
Format



Junction Box Format*

- Fully dimmable
- Patented spectral output for avian vision
- Advanced 12W system optimized for poultry
- Dim-to-Red® enhances flock productivity
- Durable, Built For Your Barn® design
- Improves animal welfare

*Product shown with recommended junction box
**Compatible with AgriShift® STC/STA Stringer



AgriShift® lighting systems “shift” spectrum and intensity, meeting the individual needs of your animals†.



Dim-to-Red® technology provides natural dawn and dusk simulation, reducing stress on your animals.



A Built For Your Barn® design uses techniques and materials that withstand harsh barn environments for years to come.

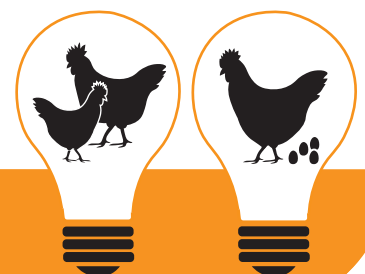
Animal-Centric Lighting Systems

The AgriShift® MLL makes it easy to improve production and animal welfare by providing natural daylight simulation. The Dim-to-Red® technology used outputs a species-specific red spectrum shown to decrease time to peak production by stimulating ovulation via the release of reproduction stimulating hormones.

Research and on-farm testing of ONCE® lighting systems have shown immediate changes in bird behavior, increased performance and lower overall stress indicators.

The Science Behind the Technology

The AgriShift® MLL has a deep red saturated light output, with an added blue and green spectrum, benefiting the vision of your animal. The enhanced red spectrum is the only spectrum which stimulates a bird’s hypothalamic and pineal oscillators, helping maintain circadian rhythms and promoting sexual maturity. It also stimulates the release of two reproduction regulating hormones essential for sexual maturation and daily egg production.



AgriShift® MLL Specifications

Nominal Power	12W (at full intensity)
Luminous Flux	495 lm human photopic (120V) 580 lm human photopic (230V)
Input Voltage	120 VAC / 50/60 Hz, 230 VAC / 50/60 Hz
Beam Angle	180°
Light Output Equivalence	Up to 100W incandescent
Spectral Output	Species-specific red with blue enhanced white
Operating Temperature	-20°C to 40°C / -4°F to 104°F
Dimmable Range	100% to 5%, dims to red hue
Dimmer Type	Phase Modulation or Amplitude Control*
Environmental Ratings	Suitable for wet locations (JB, JJ, HW), ROHS Compliant, Suitable for Indoor Corrosive Environments, Tested to CAN/CSA C22.2 No. 94.2-07, CLAUSE 8.7
Safety	Conforms to UL Std. 1598 (HW, JB) Certified to CAN/CSA C22.2 No. 250-08 (HW, JB) Conform to UL Std. 1993 (EB, JJ) Certified to CSA Std. C22.2 No. 1993 (EB, JJ)
Rated Life	50,000 hours

Ordering Information

AgriShift® MLL 120V

Base Unit (BU)	SKU MLL-FSWR-BU-180-012-120
Edison Base (EB)	MLL-FSWR-EB-180-012-120
Jelly Jar (JJ)	MLL-FSWR-JJ-180-012-120
<i>Includes JJ adaptor/connector kit</i>	
Junction Box (JB)	MLL-FSWR-JB-180-012-120
<i>Includes JB adaptor/connector kit</i>	
Hard Wire (HW)	MLL-FSWR-HW-180-012-120

AgriShift® MLL 230V

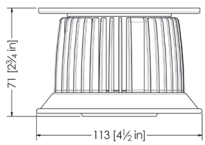
Base Unit (BU)	SKU MLL-FSWR-BU-180-012-230
Edison Base (EB)	MLL-FSWR-EB-180-012-230
Jelly Jar (JJ)	MLL-FSWR-JJ-180-012-230
<i>Includes JJ adaptor/connector kit</i>	
Junction Box (JB)	MLL-FSWR-JB-180-012-230
<i>Includes JB adaptor/connector kit</i>	
Hard Wire (HW)	MLL-FSWR-HW-180-012-230

AgriShift® MLL Accessories

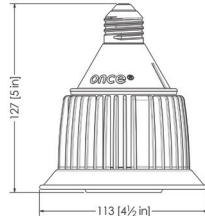
AgriShift® G Controller	SKU ALC-G2S-UNAC-2-10
AgriShift® Master Controller 120V	30-014-00188-L123
AgriShift® Slave Dimmer 120V	30-014-00189-L123
AgriShift® Master Controller 240V-50Hz	30-014-00180-L123
AgriShift® Master Controller 240V-60Hz	30-014-00180-L123-60Hz
Junction Box	PRB57550GY
<i>Five ¾" threaded outlets</i>	
Junction Box	PRB575GYKO
<i>Five total ¾" KO hubs, four sealed</i>	
AgriShift® STC, Stringer Connector	STC-0183-10-080
<i>~24½ m OAL, 2.43 m sections</i>	
AgriShift® STC, Stringer Connector	STC-0184-10-100
<i>~30½ m OAL, 3 m sections</i>	
AgriShift® STA, Stringer Adaptor, 30 cm OAL	STA-0197-3-012
AgriShift® STA, Stringer Adaptor, 1 m OAL	STA-0189-3-039
AgriShift® STA, Stringer Adaptor, 2 m OAL	STA-0190-3-079
AgriShift® STA, Stringer Adaptor, 3 m OAL	STA-0191-3-118
Starter Cable, 4 ft OAL	STAR-0198-3-004
<i>Male connector on one end</i>	

AgriShift® MLL Mechanical Dimensions

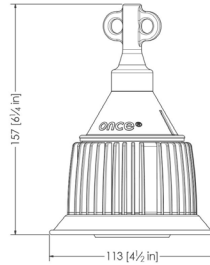
Junction Box (JB)



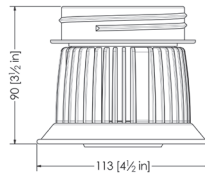
Edison Base (EB)



Hardwire (HW)



Jelly Jar (JJ)



* For optimum dimming performance use AgriShift® Controllers

Complete Your AgriShift® Lighting System: AgriShift® G Controller

- Improves animal welfare
- Offers several advanced features, adding flexibility
- Eliminates lighting anomalies to increase production
- Universal input power

The AgriShift® G Controller is a slave dimmer that provides full potential to any ONCE® AC lighting fixture. It offers smooth dimming solutions that can easily be controlled by two separate 0-10 VDC control signals and several advanced features, giving added flexibility while addressing the complex needs of today's modern agriculture facilities.

