



Base Unit
Format*



Edison Base
Format



Hard Wire Format

- Improves productivity
- Optimizes animal welfare
- Advanced species-specific light spectrum
- Dim-to-Red® technology enhances flock performance
- Decreases time to peak production
- Helps maintain circadian rhythms
- Benefits the vision of your bird
- Promotes sexual maturity

*Compatible with AgriShift® STC/STA Stringer



AgriShift® lighting systems "shift" spectrum and intensity, meeting the individual needs of your animals¹.



Dim-to-Red® technology provides natural dawn and dusk simulation, reducing stress on your animals.



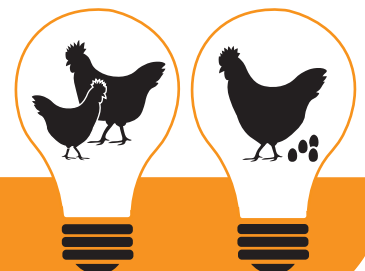
A Built For Your Barn® design uses techniques and materials that withstand harsh barn environments for years to come.

Animal-Centric Lighting Systems

The AgriShift® MLM-R makes it easy to improve production and animal welfare by providing species-specific daylight simulation with Dim-to-Red® technology. The red spectrum used has been shown to decrease time to peak production by stimulating the release of two reproduction regulating hormones essential for sexual maturation and daily egg laying. Sunrise and sunset simulation eliminates the stress of switching lights on and off abruptly. This lessens overall stress in flock and lowers mortality, while improving immune response and animal welfare.

The Science Behind the Technology

The AgriShift® MLM-R has a deep red saturated light output, with an added blue and green spectrum, benefiting the vision of your bird. The enhanced red spectrum is the only spectrum shown to stimulate a hen's hypothalamic and pineal oscillators, helping maintain circadian rhythms and promoting sexual maturity.



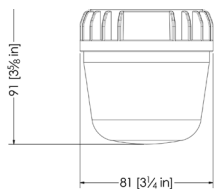
AgriShift® MLM-R Specifications

Nominal Power	8W (at full intensity)
Luminous Flux	575 lm human photopic (120V) 1120 lm poultry photopic (120V)
Input Voltage	120 VAC / 60 Hz, 230 VAC / 50/60 Hz
Beam Angle	200°
Light Output Equivalence	Up to 40W incandescent
Spectral Output	Species-specific red enhanced white
Operating Temperature	-20°C to 40°C / -4°F to 104°F
Dimmable Range	100% to 5%, dims-to-red hue
Dimmer Type	Phase Modulation or Amplitude Control*
Environmental Ratings	Suitable for indoor corrosive environments per UL50E Salt Spray Test (BU, JB, JJ, HW), Suitable for damp locations, RoHS Compliant
Safety	Conforms to ANSI/UL STD 1598 (BU, JB, JJ, HW), Certified to Can/CSA STD. C22.2 NO. 250.0 (BU, JB, JJ, HW), Certified to CAN/CSA STD C22.2 NO. 1993 (EB), Conforms to ANSI/UL STD. 1993 (EB)
Rated Life	50,000 hours

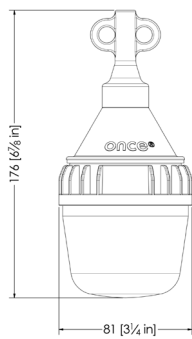
*For optimum dimming performance use AgriShift® Controllers

AgriShift® MLM-R Mechanical Dimensions

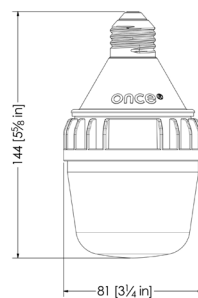
Base Unit (BU)



Hard Wire (HW)



Base Edison (EB)



Ordering Information

AgriShift® MLM-R 120V

Base Unit (BU)
Edison Base (EB)
Jelly Jar (JJ)
Includes JJ adaptor/connector kit
Junction Box (JB)
Includes JB adaptor/connector kit
Hard Wire (HW)

AgriShift® MLM-R 230V

Base Unit (BU)
Edison Base (EB)
Jelly Jar (JJ)
Includes JJ adaptor/connector kit
Junction Box (JB)
Includes JB adaptor/connector kit
Hard Wire (HW)

AgriShift® MLM-R Accessories

AgriShift® G Controller
AgriShift® Master Controller 120V
AgriShift® Slave Dimmer 120V
AgriShift® Master Controller 240V-50Hz
AgriShift® Master Controller 240V-60Hz
Junction Box
Five 3/4" threaded outlets
Junction Box
Five total 3/4" KO hubs, four sealed
AgriShift® STC, Stringer Connector
~24 1/2 m OAL, 2.43 m sections
AgriShift® STC, Stringer Connector
~30 1/2 m OAL, 3 m sections
AgriShift® STA, Stringer Adaptor, 30 cm OAL
AgriShift® STA, Stringer Adaptor, 1 m OAL
AgriShift® STA, Stringer Adaptor, 2 m OAL
AgriShift® STA, Stringer Adaptor, 3 m OAL
Starter Cable, 4 ft OAL
Male connector on one end

SKU

MLM-FSWR-BU-180T-008-120
MLM-FSWR-EB-180T-008-120
MLM-FSWR-JJ-180T-008-120

MLM-FSWR-JB-180T-008-120

MLM-FSWR-HW-180T-008-230

SKU

MLM-FSWR-BU-180T-008-230
MLM-FSWR-EB-180T-008-230
MLM-FSWR-JJ-180T-008-230

MLM-FSWR-JB-180T-008-230

MLM-FSWR-HW-180T-008-230

SKU

ALC-G2S-UNAC-2-10
30-014-00188-L123
30-014-00189-L123
30-014-00180-L123
30-014-00180-L123-60Hz
PRB57550GY

PRB575GYKO

STC-0183-10-080

STC-0184-10-100

STA-0197-3-012

STA-0189-3-039

STA-0190-3-079

STA-0191-3-118

STAR-0198-3-004

NEWLY
RELEASED!

AgriShift® STC/STA Stringer Connector/Adaptor

The AgriShift® STC/STA is a stringer designed with the flexibility to fit any ONCE® ML fixture or select in-system tube lighting option. The various drop cord lengths allow for easy and cost efficient installation.

Attaching to the ceiling of barns up to 152 meters long, the AgriShift® STC/STA comes in 25 or 30 1/2 meter lengths, with 2.43 or 3 meter sections.

